

air prep

# Lockout Valve Series



# numatics®

---

|                                |     |
|--------------------------------|-----|
| <b>Lockout Series</b> .....    | 3-7 |
| Features and Benefits .....    | 3   |
| Manual Lockout Valves .....    | 4   |
| Slo-Start Lockout Valves ..... | 5   |
| High Flow Lockout Valves ..... | 6   |
| Modular Lockout Valves .....   | 7   |



### Numatics Lockout Valves



Lockout valves prevent unauthorized pressurization of an air system during service or maintenance. Numatics lockout valves employ a unique, one piece center spool design that accommodates a user-supplied padlock in the closed position. When locked in the closed position, the system controlled by the lockout valve cannot be operated until the padlock is removed.

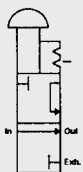
Numatics lockout valves are available in several different designs, including manual, Slo-Start™, and Modular. Each lockout valve is equipped with an emergency shutoff feature that quickly exhausts all downstream air to atmosphere. An additional feature of the Slo-Start™ valves is their capability to gradually build up downstream pressure before opening to full flow conditions.

#### Features of Numatics lockout Valves

- Emergency shutoff
- Quick exhaust of downstream pressure
- Meets OSHA specifications
- Integrated hole for tradesman lock
- Sturdy construction
- Durable and long lasting
- Standardized bright yellow body with a red knob is easily identified as a lockout device
- Slo-Start™ feature prolongs life of downstream pneumatic components



## Lockout Valve Series



ANSI SYMBOL

### Manual Lockout Valves VL30/VL40 Series

- High exhaust capability
- Detented spool
- Low-friction startup
- Meets OSHA specifications
- Surface mountable

### Specifications

Temperature Range: 40°F to 120° F (4.4° C to 46.9° C)

Maximum Pressure: 150 PSIG (10 bar)

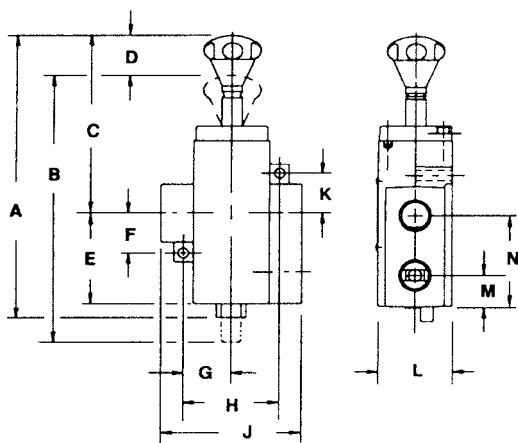
Flow Media: filtered air

Weight: VL30 Series 2.1 lbs (.95 kg)

VL40 Series 4.4 lbs (2 kg)

### Cv Ratings

| MODEL NUMBER | Cv<br>IN-OUT | Cv<br>OUT-EXH |
|--------------|--------------|---------------|
| VL30N03Y     | 4.8          | 3.7           |
| VL30N04Y     | 6.8          | 5.2           |
| VL30N06Y     | 8.5          | 7.5           |
| VL40N06Y     | 13.5         | 11.0          |
| VL40N08Y     | 18.2         | 14.9          |
| VL40N10Y     | 19.1         | 14.9          |
| VL40N12Y     | 20.3         | 16.3          |



### Mounting Dimensions

top dimensions = inches

bottom dimensions (in parenthesis) = millimeters

| MODEL NUMBER | A | B | C | D | E | F | G |
|--------------|---|---|---|---|---|---|---|
|--------------|---|---|---|---|---|---|---|

|      |                 |                 |               |                |                |                |                |
|------|-----------------|-----------------|---------------|----------------|----------------|----------------|----------------|
| VL30 | 8.04<br>(204.2) | 7.54<br>(191.5) | 5.16<br>(131) | 0.96<br>(24.4) | 2.38<br>(60.5) | 1.12<br>(28.6) | 1.31<br>(33.3) |
|------|-----------------|-----------------|---------------|----------------|----------------|----------------|----------------|

|      |                 |                 |                 |              |                |                |                |
|------|-----------------|-----------------|-----------------|--------------|----------------|----------------|----------------|
| VL40 | 9.75<br>(247.7) | 9.27<br>(235.5) | 6.12<br>(155.4) | 1.30<br>(33) | 3.13<br>(79.5) | 1.50<br>(38.1) | 1.62<br>(41.3) |
|------|-----------------|-----------------|-----------------|--------------|----------------|----------------|----------------|

| MODEL NUMBER | H | J | K | L | M | N |
|--------------|---|---|---|---|---|---|
|--------------|---|---|---|---|---|---|

|      |                |                |                |                |              |                |
|------|----------------|----------------|----------------|----------------|--------------|----------------|
| VL30 | 2.62<br>(66.6) | 3.76<br>(95.5) | 1.12<br>(28.6) | 2.00<br>(50.8) | 0.75<br>(19) | 2.38<br>(60.5) |
|------|----------------|----------------|----------------|----------------|--------------|----------------|

|      |                |                 |                |                |                |                |
|------|----------------|-----------------|----------------|----------------|----------------|----------------|
| VL40 | 3.25<br>(82.6) | 4.76<br>(120.9) | 1.50<br>(38.1) | 2.50<br>(63.5) | 1.09<br>(27.7) | 3.13<br>(79.5) |
|------|----------------|-----------------|----------------|----------------|----------------|----------------|

### How To Order

V L 30 N 03 Y

#### Threads

N = NPTF

G = G Tap (BSPP)

#### Port Size

03 = 3/8 in/out, 3/8 exh.

04 = 1/2 in/out, 1/2 exh.

06 = 3/4 in/out, 3/4 exh.

#### Options

A = Metal Muffler (i.e. VL30N03AY)

B = Scissor Lockout (i.e. VL30N03BY)

V L 40 N 06 Y

#### Threads

N = NPTF

G = G Tap (BSPP)

#### Port Size

06 = 3/4 in/out, 3/4 exh.

08 = 1 in/out, 1 exh.

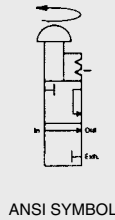
10 = 1 1/4 in/out, 1 exh.

12 = 1 1/2 in/out, 1 exh.

#### Options

A = Metal Muffler (i.e. VL40N08AY)

B = Scissor Lockout (i.e. VL40N08BY)



### Slo-Start™ Lockout Valves VT30/VT40 Series

- Slow start-up
- High exhaust capability
- Detented spool
- Low-friction seals
- Meets OSHA specifications
- Surface mountable

### Specifications

Temperature Range: 40°F to 120° F (4.4° C to 46.9° C)

Maximum Pressure: 150 PSIG (10 bar)

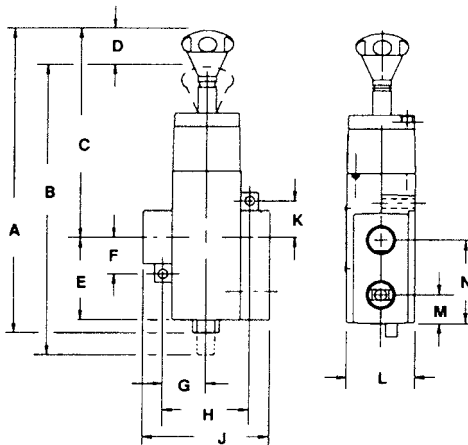
Flow Media: filtered air

Weight: VT30 Series 2.5 lbs (1.13 kg)

VT40 Series 5.0 lbs (2.27 kg)

### Cv Ratings

| MODEL NUMBER | Cv IN-OUT | Cv OUT-EXH |
|--------------|-----------|------------|
| VT30N03Y     | 4.8       | 3.7        |
| VT30N04Y     | 6.8       | 5.2        |
| VT30N06Y     | 8.5       | 7.5        |
| VT40N06Y     | 13.5      | 11.0       |
| VT40N08Y     | 18.2      | 14.9       |
| VT40N10Y     | 19.1      | 14.9       |
| VT40N12Y     | 20.3      | 16.3       |



### Mounting Dimensions

top dimensions = inches  
bottom dimensions (in parenthesis) = millimeters

| MODEL NUMBER | A                | B                | C               | D              | E              | F              | G              |
|--------------|------------------|------------------|-----------------|----------------|----------------|----------------|----------------|
| VT30         | 9.36<br>(237.7)  | 8.86<br>(225)    | 6.48<br>(164.6) | 0.96<br>(24.3) | 2.38<br>(60.5) | 1.12<br>(28.6) | 1.31<br>(33.3) |
| VT40         | 11.45<br>(290.8) | 10.97<br>(278.6) | 7.82<br>(198.6) | 1.30<br>(33)   | 3.13<br>(79.5) | 1.50<br>(38.1) | 1.62<br>(41.3) |

| MODEL NUMBER | H              | J               | K              | L              | M              | N              |
|--------------|----------------|-----------------|----------------|----------------|----------------|----------------|
| VT30         | 2.62<br>(66.6) | 3.76<br>(95.5)  | 1.12<br>(28.6) | 2.00<br>(50.8) | 0.75<br>(19)   | 2.38<br>(60.5) |
| VT40         | 3.25<br>(82.6) | 4.76<br>(120.9) | 1.50<br>(38.1) | 2.50<br>(63.5) | 1.09<br>(27.7) | 3.13<br>(79.5) |

### How To Order

V T 30 N 03 Y

Threads  
N = NPTF  
G = G Tap (BSPP)

Port Size  
03 = 3/8 in/out, 3/8 exh.  
04 = 1/2 in/out, 1/2 exh.  
06 = 3/4 in/out, 3/4 exh.

Options  
A = Metal Muffler (i.e. VT30N03AY)  
B = Scissor Lockout (i.e. VT30N03BY)

V T 40 N 06 Y

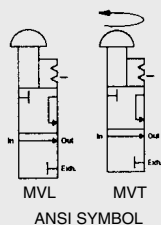
Threads  
N = NPTF  
G = G Tap (BSPP)

Port Size  
06 = 3/4 in/out, 3/4 exh.  
08 = 1 in/out, 1 exh.  
10 = 1 1/4 in/out, 1 exh.  
12 = 1 1/2 in/out, 1 exh.

Options  
A = Metal Muffler (i.e. VT40N08AY)  
B = Scissor Lockout (i.e. VT40N08BY)



## Lockout Valve Series



### High Flow Lockout Valves VL52/VT52 Series

- High flow
- High exhaust capability
- Detented spool
- Low-friction startup
- Meets OSHA specifications
- Surface mountable

### Specifications

Temperature Range: 40°F to 120° F (4.4° C to 46.9° C)

Maximum Pressure: 150 PSIG (10 bar)

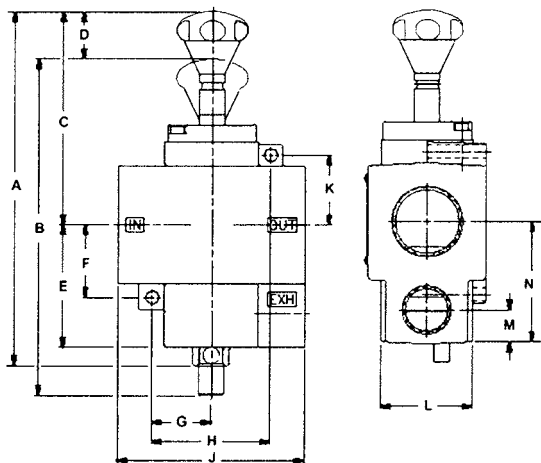
Flow Media: filtered air

Weight: VL52 Series 4.125 lbs (1.87 kg)

VT52 Series 5.5 lbs (2.5 kg)

### Cv Ratings

| MODEL NUMBER | Cv<br>IN-OUT | Cv<br>OUT-EXH |
|--------------|--------------|---------------|
| VL52N12Y     | 24           | 16            |
| VL52N16Y     | 24           | 16            |
| VT52N12Y     | 24           | 16            |
| VT52N16Y     | 24           | 16            |



### Mounting Dimensions

top dimensions = inches

bottom dimensions (in parenthesis) = millimeters

| MODEL NUMBER | A                | B                | C               | D              | E              | F              | G              |
|--------------|------------------|------------------|-----------------|----------------|----------------|----------------|----------------|
| VL52         | 9.77<br>(248.2)  | 9.27<br>(235.5)  | 5.90<br>(149.9) | 1.32<br>(33.5) | 3.38<br>(85.9) | 2.00<br>(50.8) | 1.63<br>(41.4) |
| VT52         | 11.47<br>(291.3) | 10.97<br>(278.6) | 7.59<br>(192.8) | 1.32<br>(33.5) | 3.38<br>(85.9) | 2.00<br>(50.8) | 1.63<br>(41.4) |

| MODEL NUMBER | H              | J               | K              | L              | M              | N              |
|--------------|----------------|-----------------|----------------|----------------|----------------|----------------|
| VL52         | 3.24<br>(82.3) | 5.13<br>(130.3) | 1.92<br>(48.8) | 2.50<br>(63.5) | 0.88<br>(22.4) | 3.31<br>(84.1) |
| VT52         | 3.24<br>(82.3) | 5.13<br>(130.3) | 1.92<br>(48.8) | 2.50<br>(63.5) | 0.88<br>(22.4) | 3.31<br>(84.1) |

### How To Order

**V L 52 N 12 Y**

Model

L = Standard

T = Slo-Start™ Feature

Threads

N = NPTF

G = G Tap (BSPP)

Port Size

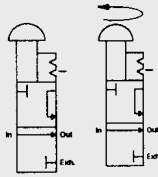
12 = 1 1/2"

16 = 2"

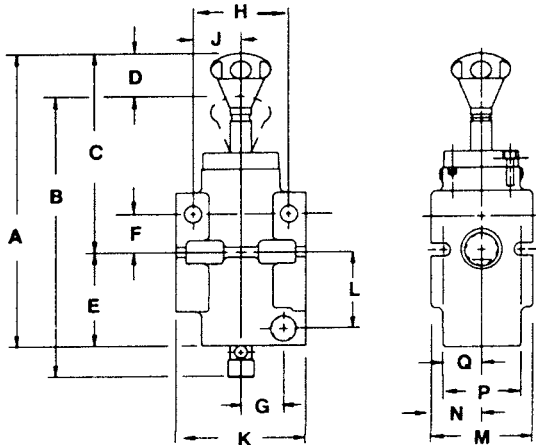
Options

A = Metal Muffler (i.e. VL52N12AY)

B = Scissor Lockout (i.e. VL52N12BY)



ANSI SYMBOL



### Mounting Dimensions

top dimensions = inches  
bottom dimensions (in parenthesis) = millimeters

| MODEL NUMBER | A               | B               | C               | D              | E              | F              | G              | H              |
|--------------|-----------------|-----------------|-----------------|----------------|----------------|----------------|----------------|----------------|
| MVL30        | 7.54<br>(191.5) | 7.54<br>(191.5) | 5.16<br>(131)   | 0.96<br>(24.3) | 2.38<br>(60.5) | 0.85<br>(21.6) | 1.06<br>(26.9) | 2.50<br>(63.5) |
| MVT30        | 8.86<br>(225)   | 8.86<br>(225)   | 6.48<br>(164.6) | 0.96<br>(24.3) | 2.38<br>(60.5) | 0.85<br>(21.6) | 1.06<br>(26.9) | 2.50<br>(63.5) |
| MVL42        | 9.26<br>(235)   | 8.44<br>(214)   | 6.13<br>(156)   | 0.48<br>(12)   | 3.13<br>(80)   | 1.10<br>(28)   | -              | 3.26<br>(83.5) |
| MVT42        | 10.98<br>(279)  | 10.14<br>(258)  | 7.82<br>(199)   | 0.48<br>(12)   | 3.13<br>(80)   | 1.10<br>(28)   | -              | 3.26<br>(83.5) |

| MODEL NUMBER | J              | K              | L              | M             | N            | P              | Q              |
|--------------|----------------|----------------|----------------|---------------|--------------|----------------|----------------|
| MVL30        | 1.25<br>(31.8) | 3.20<br>(81.3) | 1.86<br>(47.2) | 2.68<br>(68)  | 1.34<br>(34) | 2.00<br>(50.8) | 1.00<br>(25.4) |
| MVT30        | 1.25<br>(31.8) | 3.20<br>(81.3) | 1.86<br>(47.2) | 2.68<br>(68)  | 1.34<br>(34) | 2.00<br>(50.8) | 1.00<br>(25.4) |
| MVL42        | 1.63<br>(41)   | 4.00<br>(102)  | 2.04<br>(52)   | 4.00<br>(102) | 2.00<br>(51) | 3.20<br>(81)   | 1.60<br>(41)   |
| MVT42        | 1.63<br>(41)   | 4.00<br>(102)  | 2.04<br>(52)   | 4.00<br>(102) | 2.00<br>(51) | 3.20<br>(81)   | 1.60<br>(41)   |

### Repair Kits

#### Lockout Valves

##### ► Lockout Valve O-Ring Replacement Kits

includes 1 o-ring (3 needed for each lockout)

| kit#    | description                               |
|---------|---|
| 126-323 | for VL30 and VT30 Series                  |
| 126-324 | for VL40 and VT40 Series                  |
| 126-323 | for MVL30, MVT30, MVL42, and MVT42 Series |
| 126-324 | for VL52 and VT52 Series                  |

Each kit contains one o-ring, however, a lockout valve contains 3 o-rings total. To replace all o-rings in a lockout, 3 kits are needed.

## Modular Lockout Valves MVL30/MVL42/MVT30/MVT42 Series

- High exhaust capability
- Detented spool
- Low-friction startup
- Meets OSHA specifications
- Modular adaptable to Numatics **FLEXIBLOK®** 32 3/4 Series and 42 Series Products

### Specifications

Temperature Range: 40°F to 120° F (4.4° C to 46.9° C)  
Maximum Pressure: 150 PSIG (10 bar) (30 Series)  
250 PSIG (17 bar) (42 Series Only)

Flow Media: filtered air

Weight: MVL30 Series 2.1 lbs (.95 kg)  
MVT30 Series 4.4 lbs (2 kg)  
MVL42 Series: 4.95lbs (2.25 kg)  
MVT42 Series: 5.5 lbs (2.5 kg)

### Cv Ratings

| MODEL NUMBER | Cv IN-OUT | Cv OUT-EXH |
|--------------|-----------|------------|
| MVL30N06Y    | 6.0       | 5.0        |
| MVT30N06Y    | 6.0       | 5.0        |
| MVL42N06Y    | 11.5      | 9.0        |
| MVL42N08Y    | 12.5      | 10.0       |
| MVT42N06Y    | 11.5      | 9.0        |
| MVT42N08Y    | 12.5      | 10.0       |

### How To Order

**M V T 30 N 06 Y**

Model  
L = Standard  
T = Slo-Start™ Feature

Series  
30  
42

Threads  
N = NPTF  
G = G Tap (BSPP)  
R = PT (BSPT) (42 Series Only)

#### Options

A = Metal Muffler (i.e. MVL30N06AY)  
B = Scissor Lockout (i.e. MVT30N06BY)

# NUMATICS®

World Class Supplier  
of Pneumatic Components



## World Headquarters

**Numatics Incorporated**  
Phone: 248-887-4111  
Fax: 248-887-9190

## UNITED STATES

**Numatics – Air Preparation**  
Phone: 810-667-3900  
Fax: 810-667-3902

## Numatics – Valves

Phone: 248-887-4111  
Fax: 248-887-9190

## Numatics – Miniature Valves

Phone: 248-960-1400  
Fax: 248-960-2160

## Numatics – Cylinders

Phone: 615-771-1200  
Fax: 615-771-1201

## Numatics – Rodless Cylinders

Phone: 519-452-1777  
Fax: 519-452-3995

## Numatics – Automation

Phone: 440-934-3200  
Fax: 440-934-2288

## CANADA

**Ontario**  
Numatics, Ltd.  
Phone: 519-452-1777  
Fax: 519-452-3995

## Quebec

Numatics, Ltd.  
Phone: 514-332-6444  
Fax: 514-332-9273

## British Columbia

Numatics, Ltd.  
Phone: 604-574-0401  
Fax: 604-574-3713

## EUROPE

### Germany – European Headquarters

Numatics GmbH  
Phone: 011-49-22 41-31 60-0  
Fax: 011-49-22 41-31 60 40

### Hungary

Numatics Kft.  
Phone: 011-36-13 82 21 35  
Fax: 011-36-12 04 39 47

## EUROPE

### England

Numatics Limited  
Phone: 011-44-1525-37 07 35  
Fax: 011-44-1525-38 25 67

### France

Numatics s.a.r.l.  
Phone: 011-33-1 41 21 48 88  
Fax: 011-33-1 41 21 48 89

### Italy

Numatics srl  
Phone: 011-39-030-373 19 99  
Fax: 011-39-030-373 19 81

### Netherlands

Numatics B.V.  
Phone: 011-31-418-65 29 50  
Fax: 011-31-418-65 29 43

### Spain

Numatics Spain S.L.  
Phone: 011-34-93-221 21 96  
Fax: 011-34-93-221 35 14

## AFRICA

### South Africa

Numatics SA (Pty) Ltd.  
Phone: 011-27-11-8 65 44 52  
Fax: 011-27-11-8 65 42 90

## LATIN & SOUTH AMERICA

### Mexico

Numatics de Mexico S.A. de C.V.  
Phone: 011-52-222-284 6176  
Fax: 011-52-222-284 6179

### Brazil

Valvair Comercial Ltda.  
Phone: 011-55-12-351 2874  
Fax: 011-55-12-351 1958

## ASIA & PACIFIC

### Australia

Numatics Australia Pty. Ltd.  
Phone: 011-61-3-95 63 86 00  
Fax: 011-61-3-95 63 85 11

### Taiwan – Asian Headquarters

Numatics Co, Ltd. Asia  
Phone: 011-886-2-29 15 16 05  
Fax: 011-886-2-29 14 18 97

For a comprehensive listing of all Numatics production and distribution facilities worldwide, visit [www.numatics.com](http://www.numatics.com)